

Evaluating Monochrome Photography

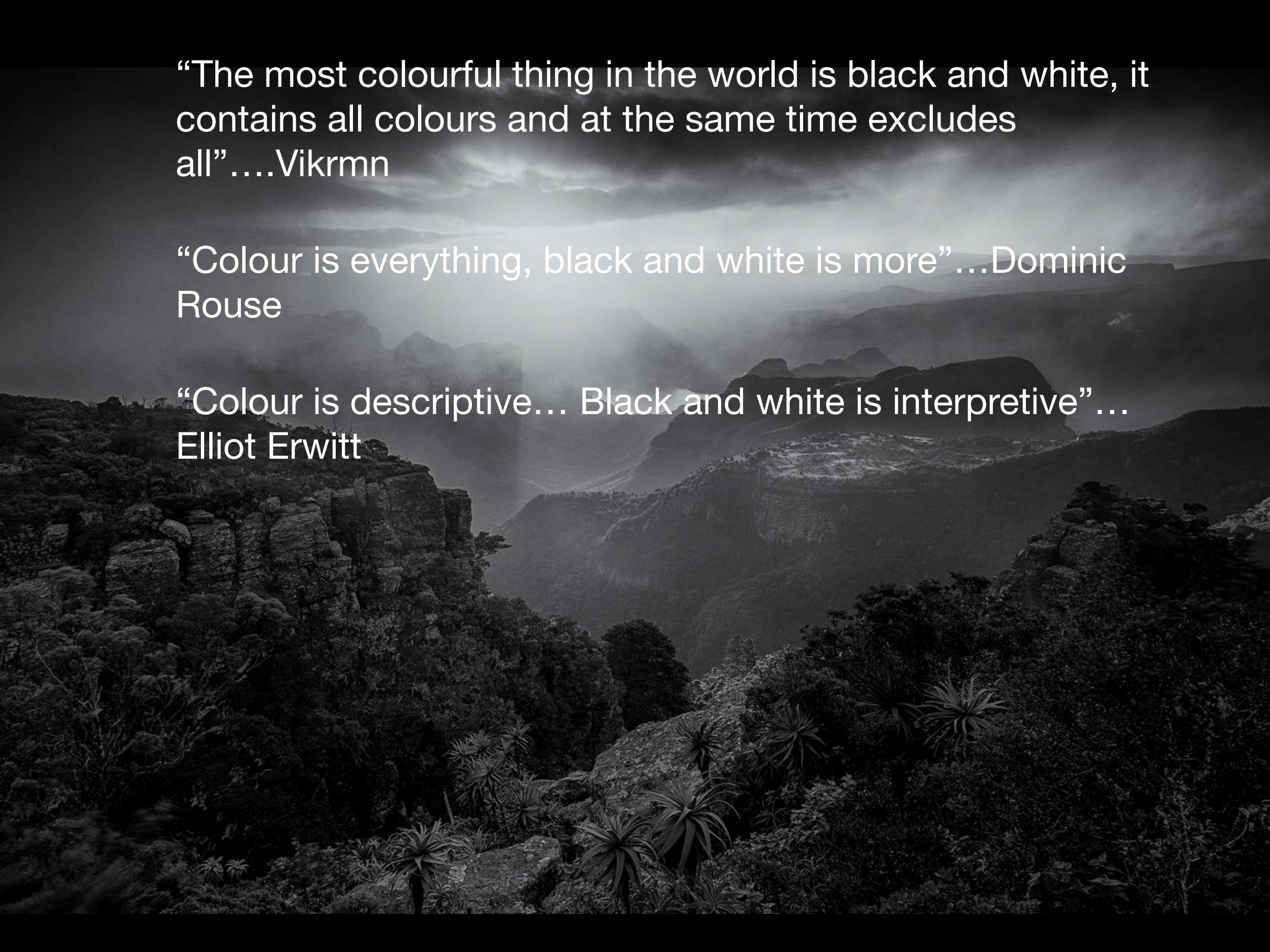


JAP Presentation by Kim Stevens

“The most colourful thing in the world is black and white, it contains all colours and at the same time excludes all”....Vikrmn

“Colour is everything, black and white is more”...Dominic Rouse

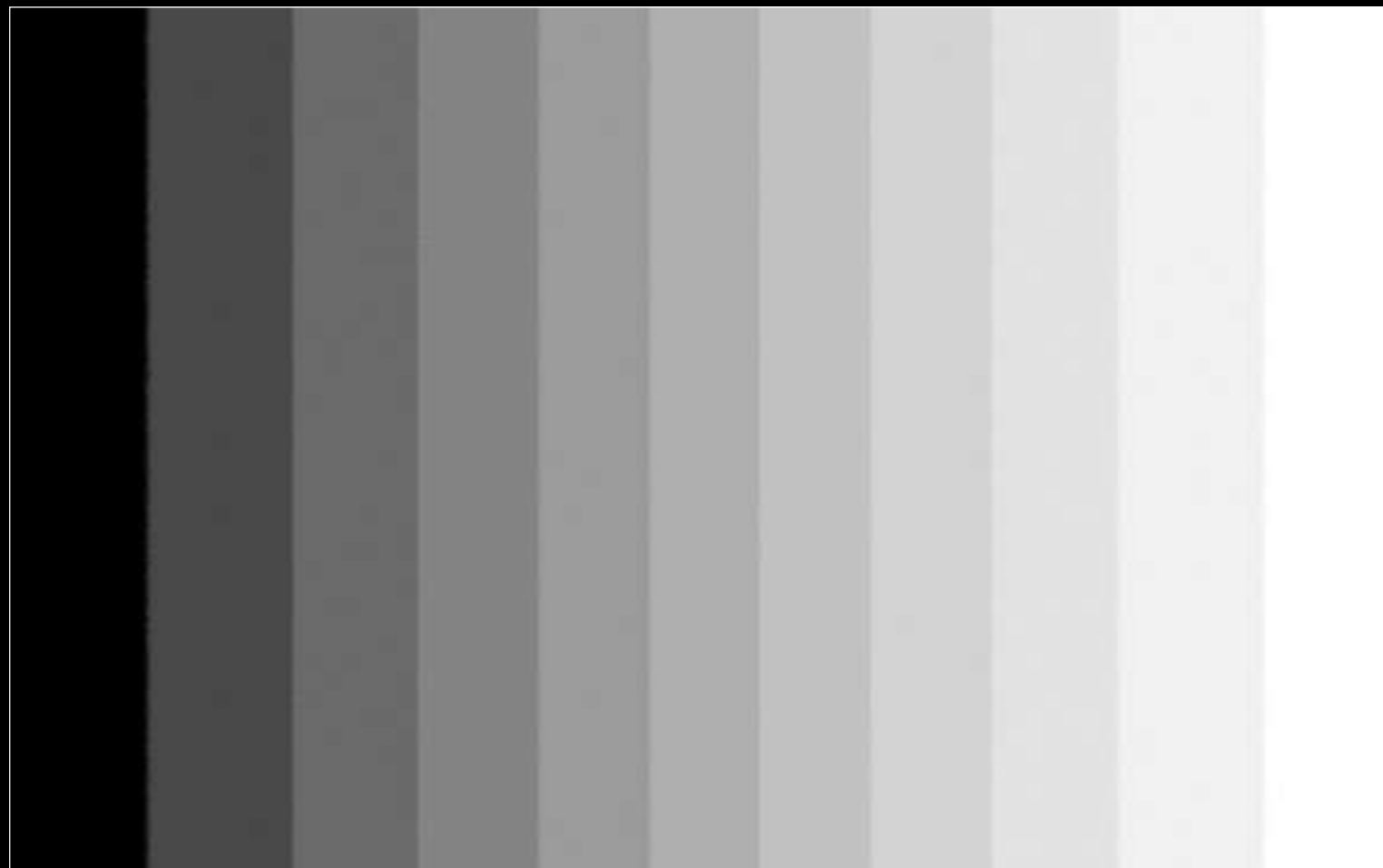
“Colour is descriptive... Black and white is interpretive”... Elliot Erwitt



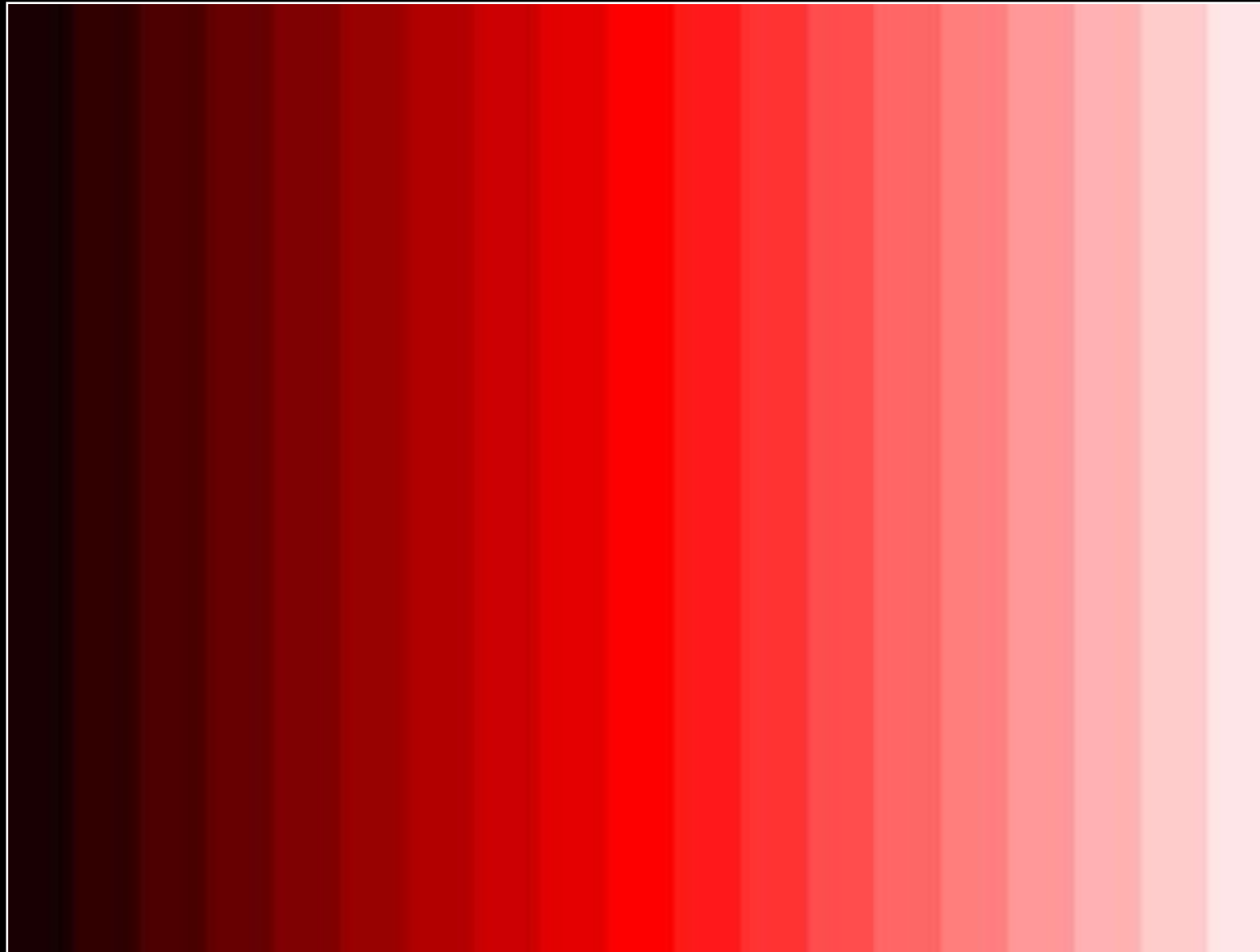
Monochrome photography records the the different amounts of light intensity (luminance) in an image and not the different hues.

Black and white photos contains tones of grey from black to white.

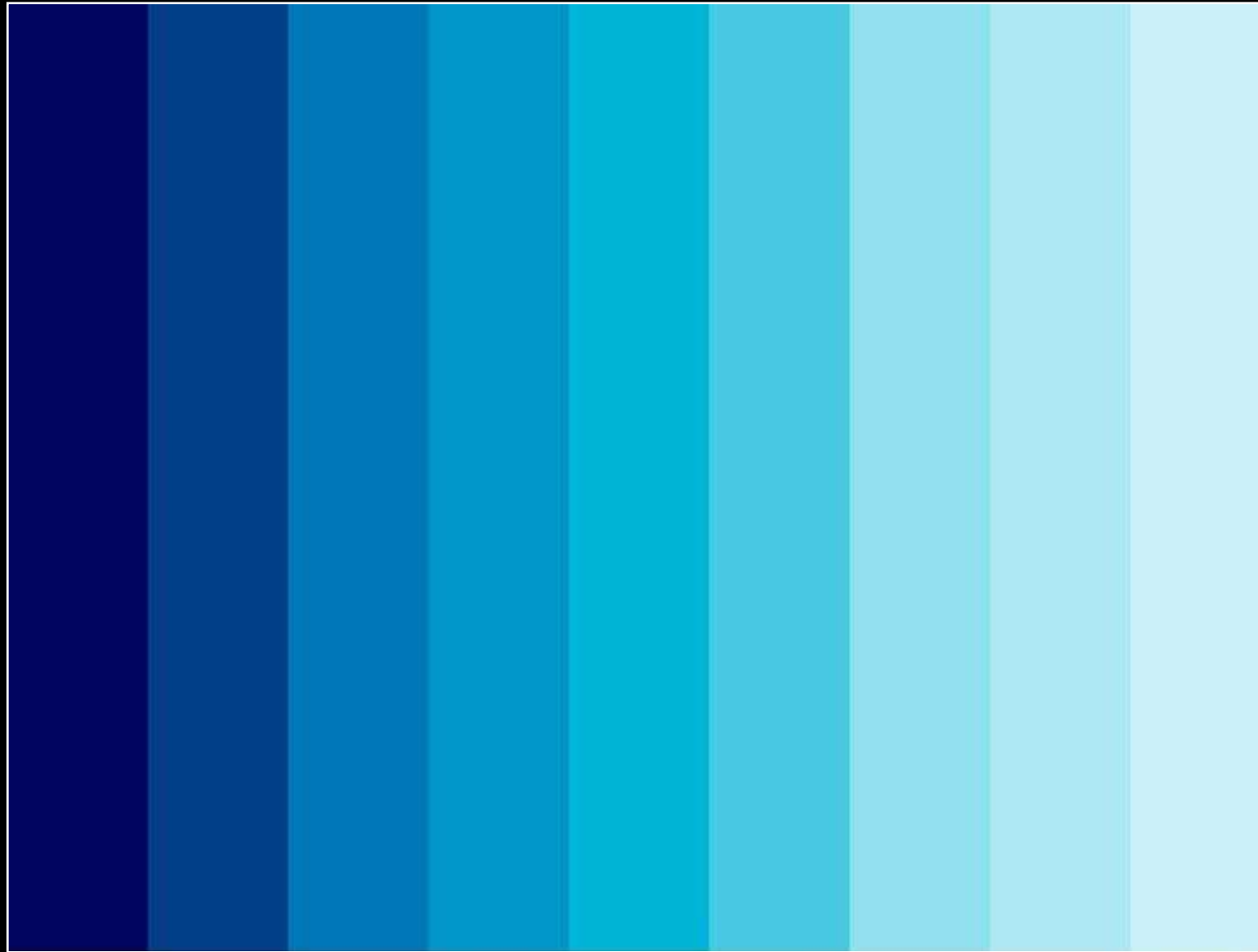
Monochrome images by definition contain different tones of a single colour but not necessarily grey.



Monochromatic tones of red



Monochromatic tones of blue



Base Color 10% 20% 30% 40% 50% 60% 70% 80% 90% 100%

Percentage	Color Description
0%	Base Color (Bright Red)
10%	Red with 10% black
20%	Red with 20% black
30%	Red with 30% black
40%	Red with 40% black
50%	Red with 50% black
60%	Red with 60% black
70%	Red with 70% black
80%	Red with 80% black
90%	Red with 90% black
100%	Black

Psychology of the absence of colour

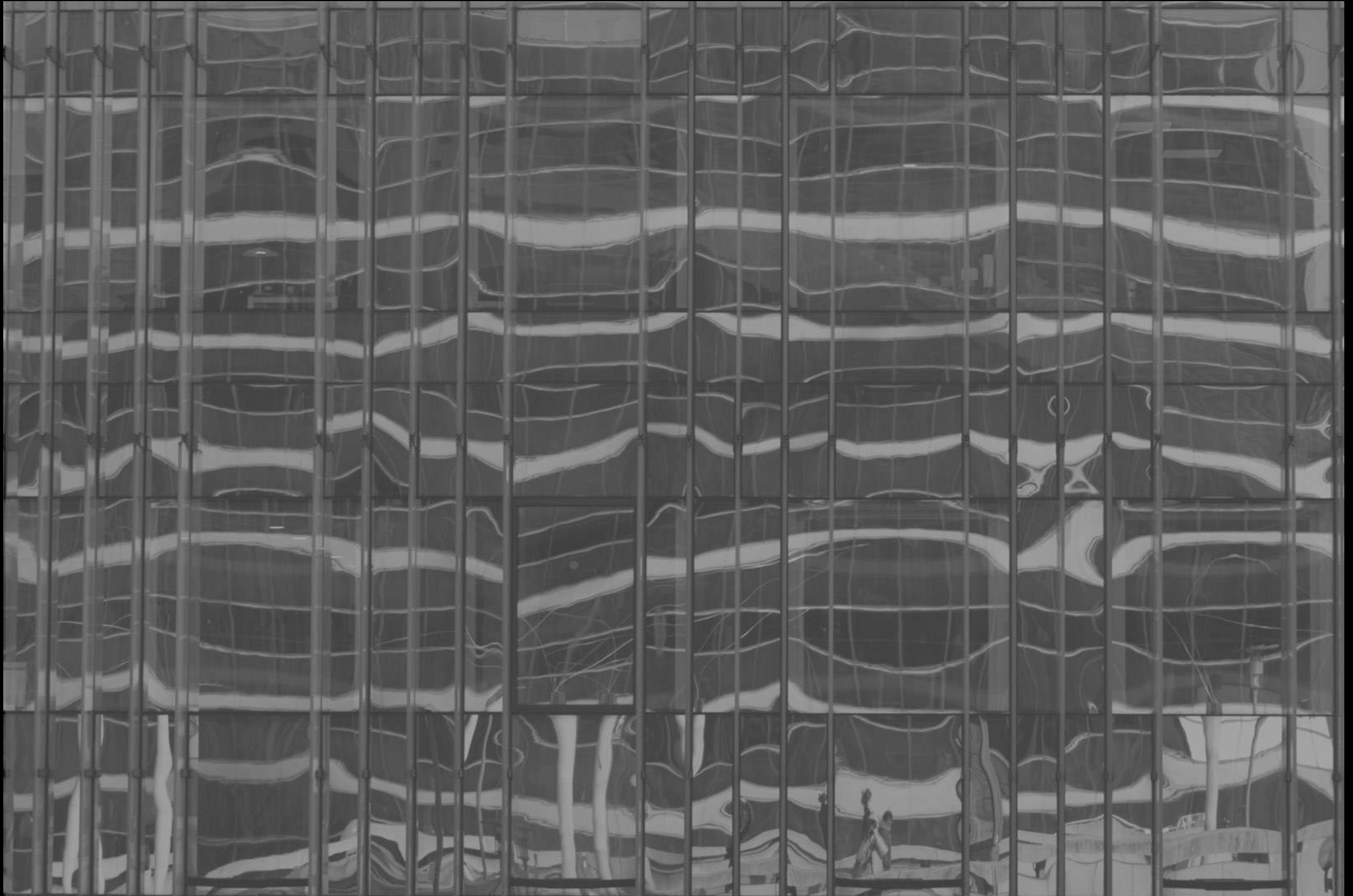
- Black



- White



- Grey



It is important to attain a balance between pure whites, pure blacks and the range of grey tones to achieve the desired outcome



Monochrome basics

Image



Form
Visual Aspects

Content
Meaning

Visual Aspects

- Line
- Shape
- Texture
- Colour

These are all dependant on light

- defines line
- defines shape
- defines texture
- determines colour

Line







Shape





Line and shape





Texture





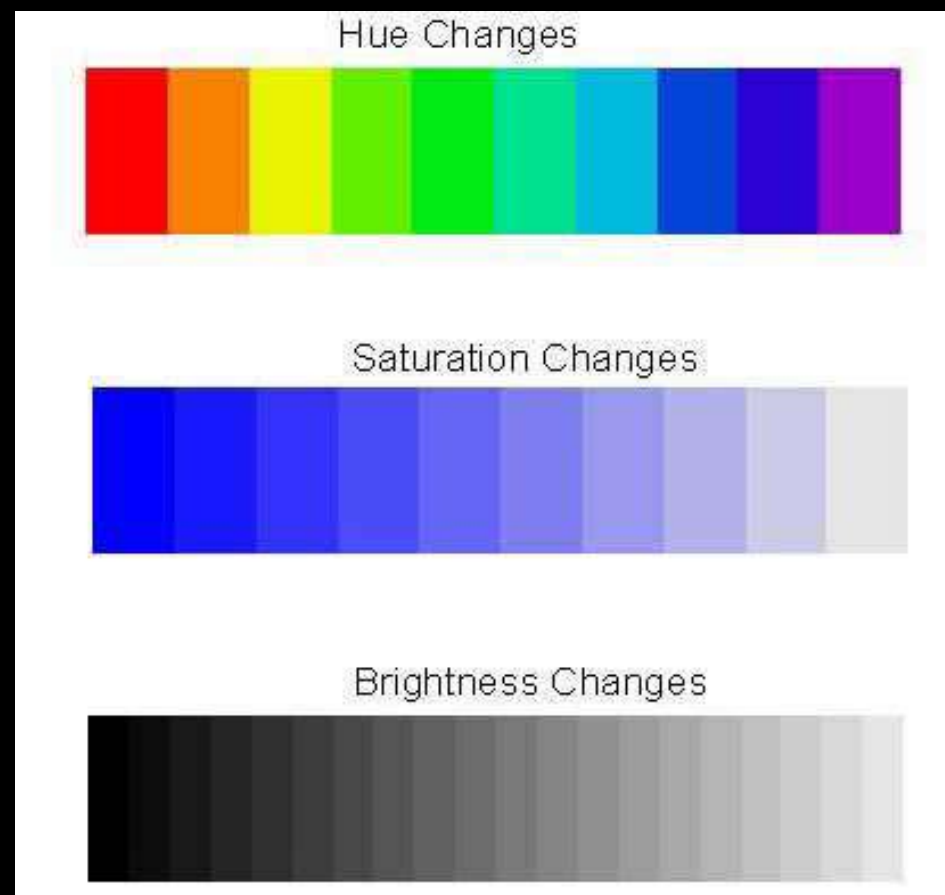
Colour is determined by the amount of light

Colour is a combination of hue, saturation and luminance (HSL)

Hue= name of colour

Saturation = intensity of colour

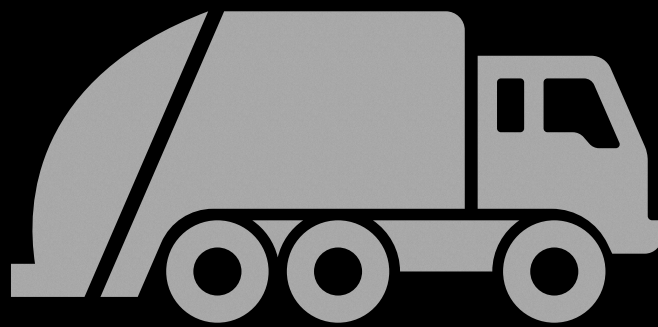
Luminance = brightness of light emitted or reflected off a surface.



HUE



Desaturate colour



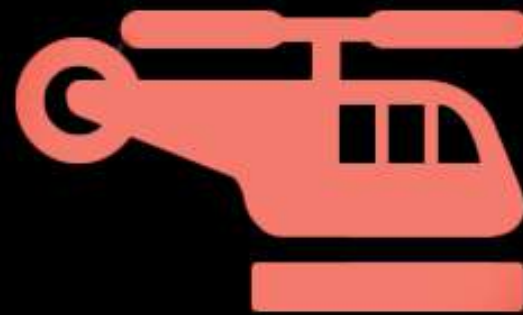
SATURATION



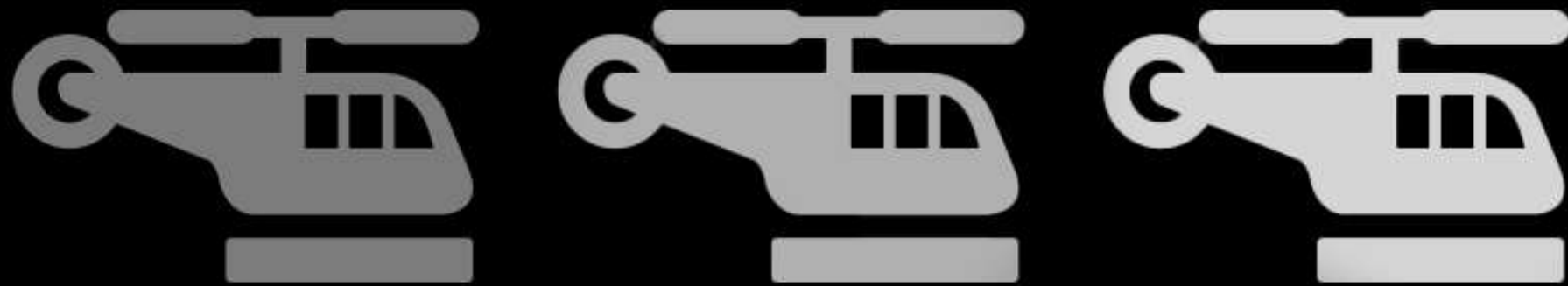
Desaturate



LUMINOSITY



Desaturate luminosity



....subtle gradations of grey tones

- A mono image is stripped of colour therefore the image relies on line, shape and texture for its visual strength.
- Hue and Saturation are irrelevant to the conversion to monochrome
- Only the luminance of a colour translates into the tones depicted in a monochrome image
- A variation and separation of these tones is key to a successful conversion



Understanding Tonal Range

ANSEL ADAMS ZONE SYSTEM

0	1	2	3	4	5	6	7	8	9	10
Pure Black	Near Black slight tonality no detail	Dark Black slight detail in shadows	Very Dark Gray distinct shadow texture is visible	Medium Dark Gray slightly darker black skin, dark foliage, landscape shadows	Middle Gray 18% gray darker tan white skin, lighter black skin, light foliage, dark blue sky	Middle Light Gray average white skin, light stone, shadow areas on snow	Light Gray pale white skin, concrete or gray asphalt in sunlight	Gray/White pale detail in highlights, white wall in sunlight, bright surfaces	Bright White slight detail in highlights, white paper, snow, white water	Pure White no detail light sources, specular highlights

- Utilising the entire tonal range



- Rich tonal range



- Mid tones



- Contrast





- Chiaroscuro effect created by the juxtaposition of a brightly lit areas and deep shadow. The transition takes place over a short distance.





<https://www.flickr.com/photos/thomasleuthard/>



- Shadows







- Figure to ground composition













Consider why an author chose to convert to Mono ?

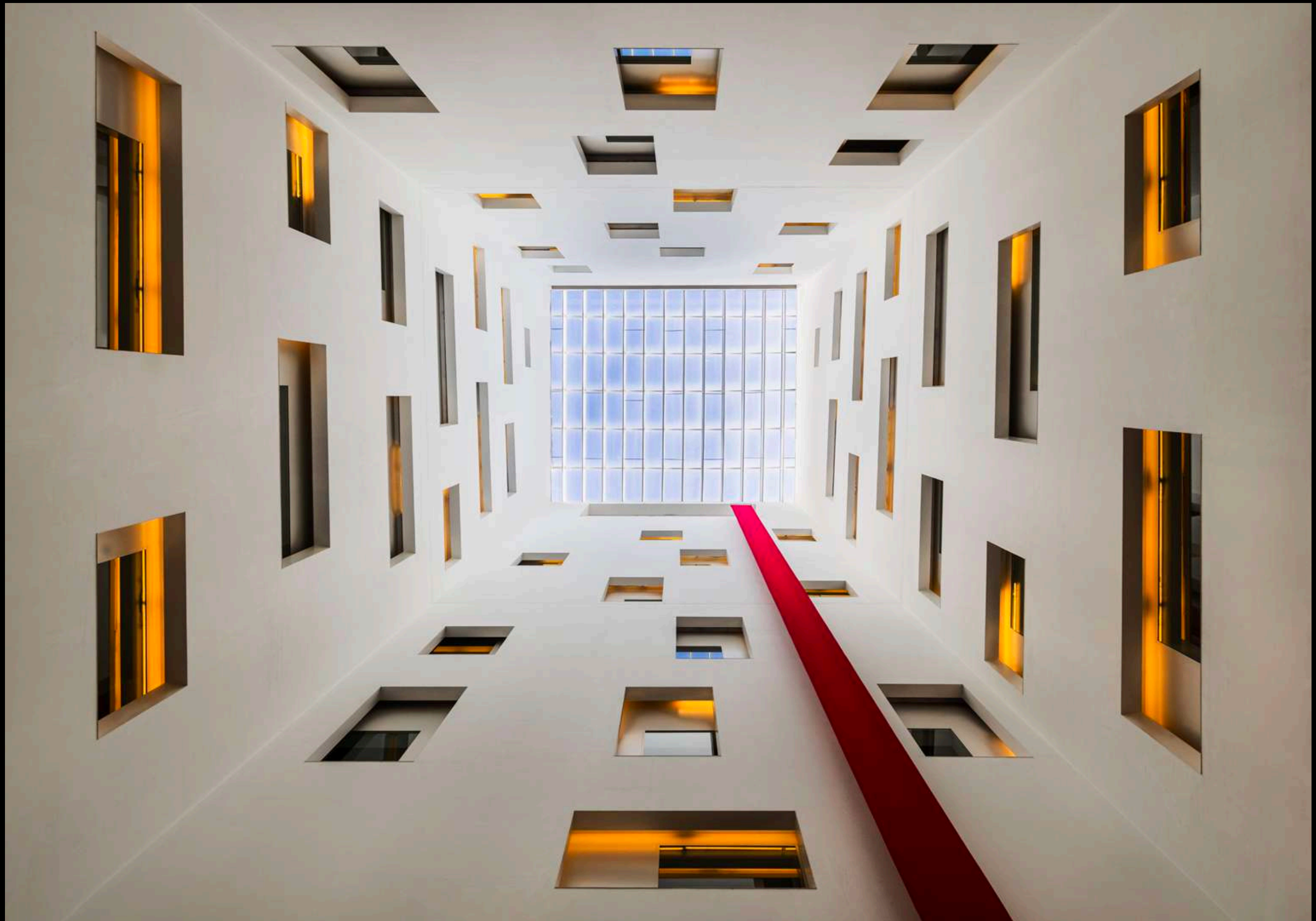
- Strips image to its essence
- suggests honesty and truth
- dignity
- timelessness
- elevates the mundane
- artistic
- elegant / classic
- romantic
- drama/mood/emotion













7 elements of successful monochrome images

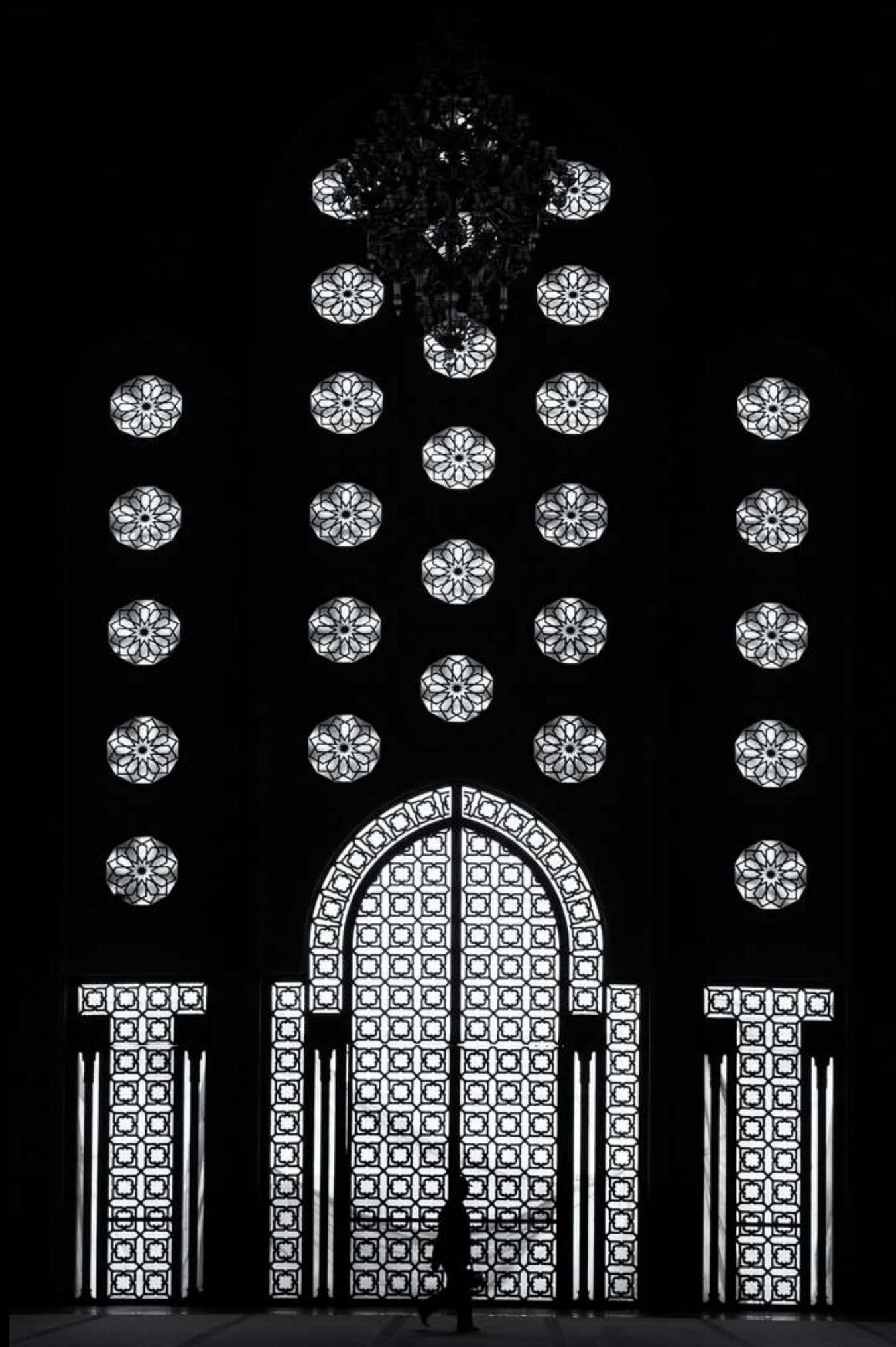
- Shadows... become a major element of the composition...carry visual weight
- Contrast...needs to make sense for your subject. Can be stark or subtle.
- Tones...cornerstone of every B&W image .
- Shapes...they are interpretive and anchor and simplify the photo
- Texture...fills in the rest
- Composition...a sense of the underlying purpose
- Emotion

















Let us consider other concepts associated with monochrome images one may be presented with

- toning
- high key
- low key
- infrared
- minimalism

Toning



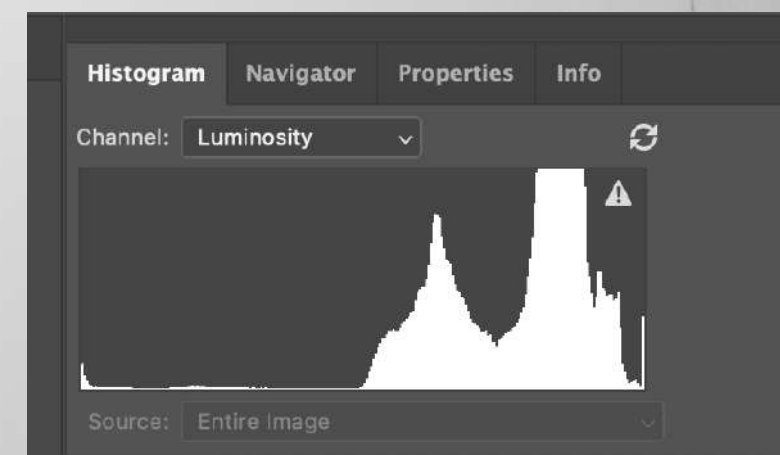


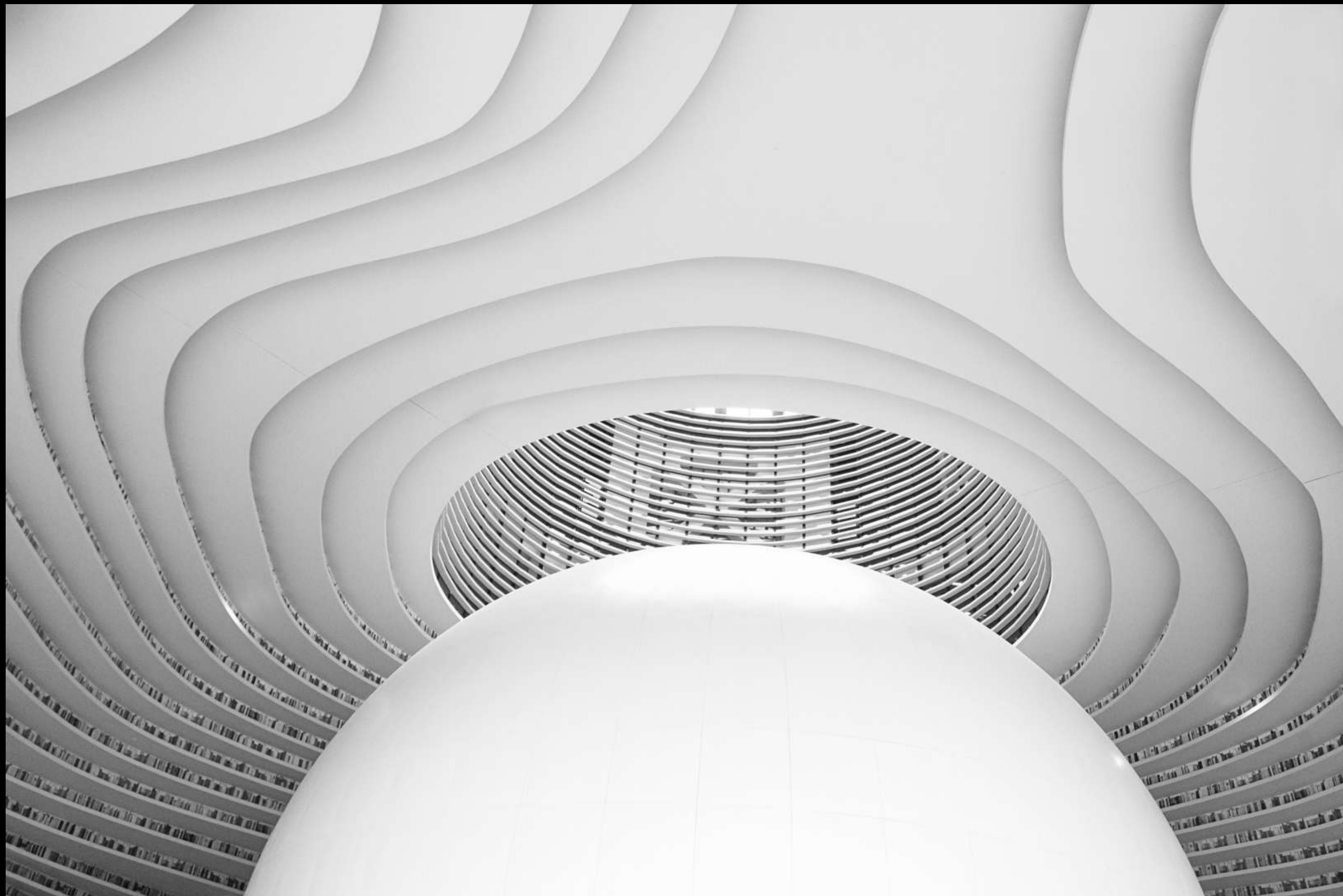




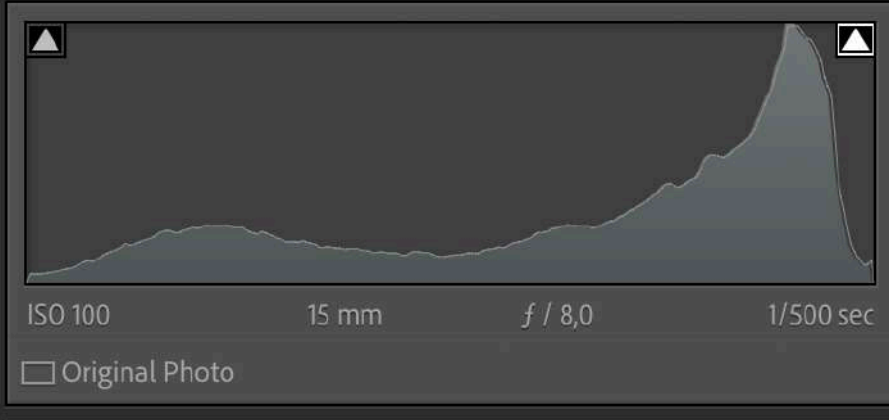


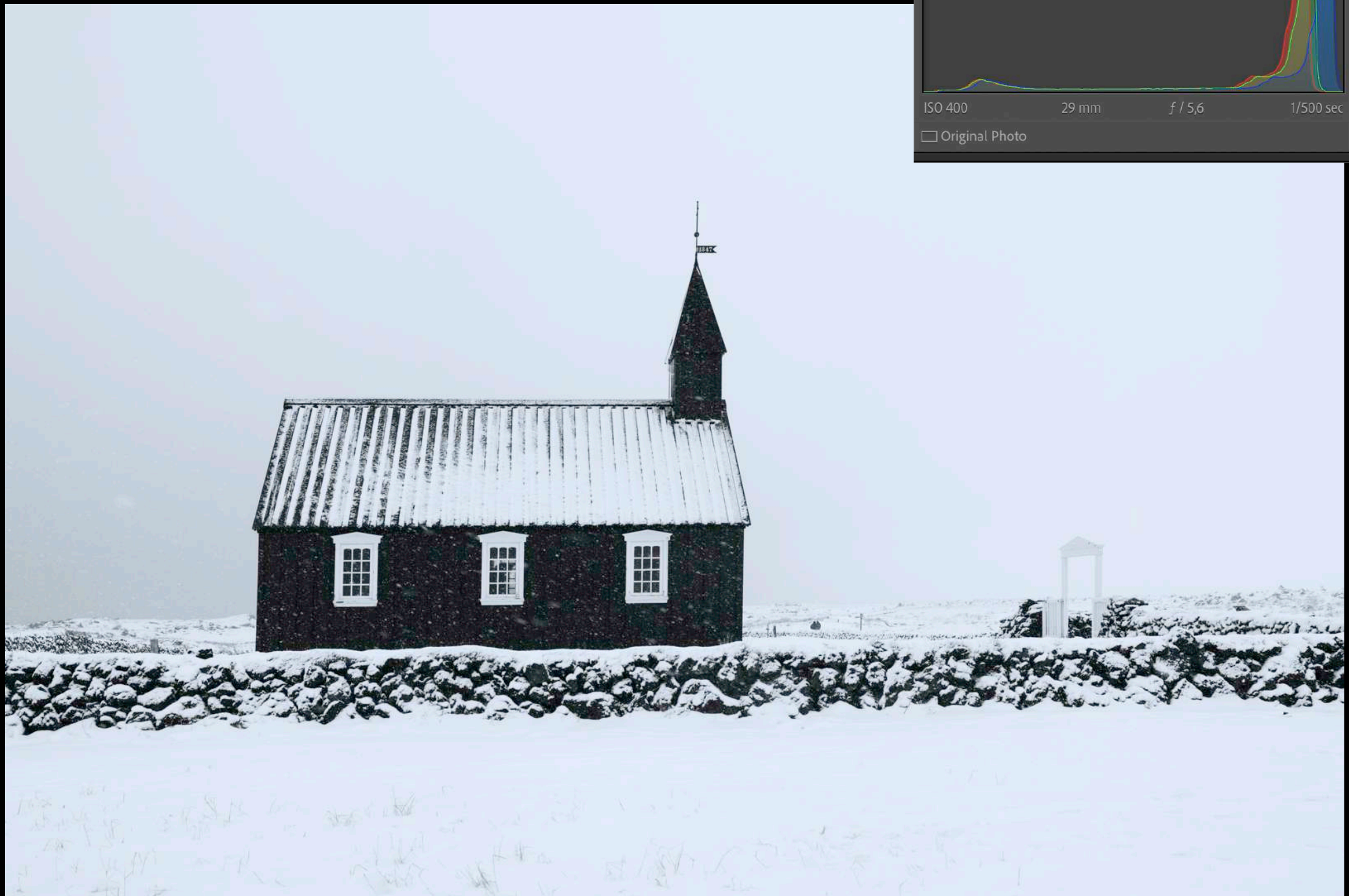
Hi key monochrome











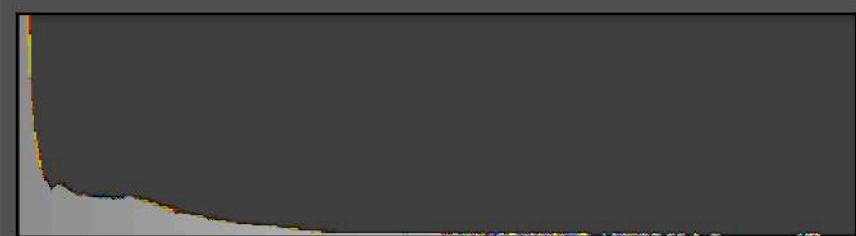


Low Key Monochrome





Histogram ▼



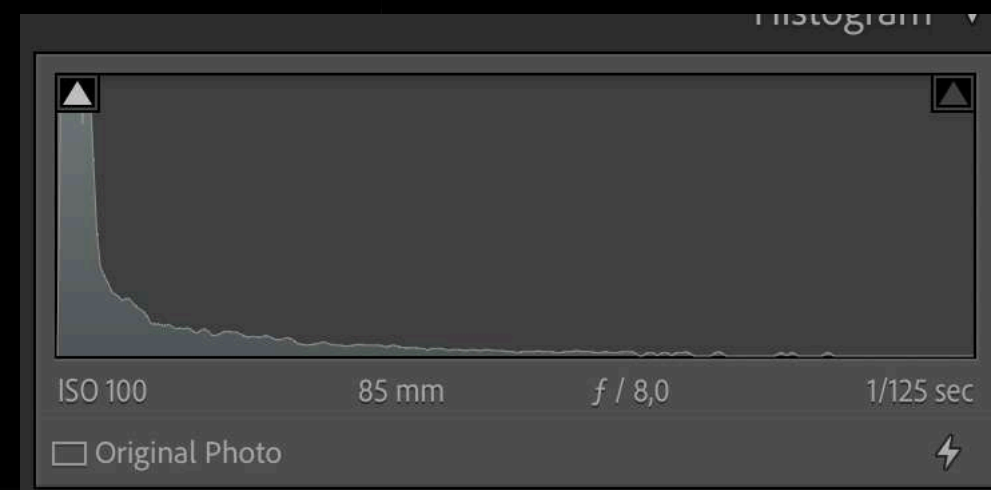
ISO 100

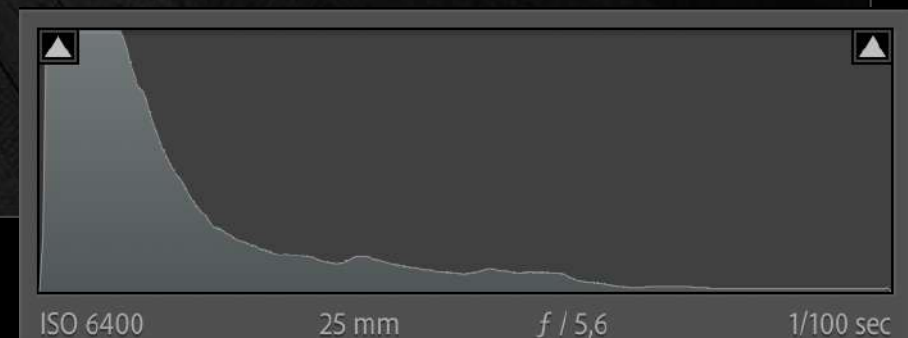
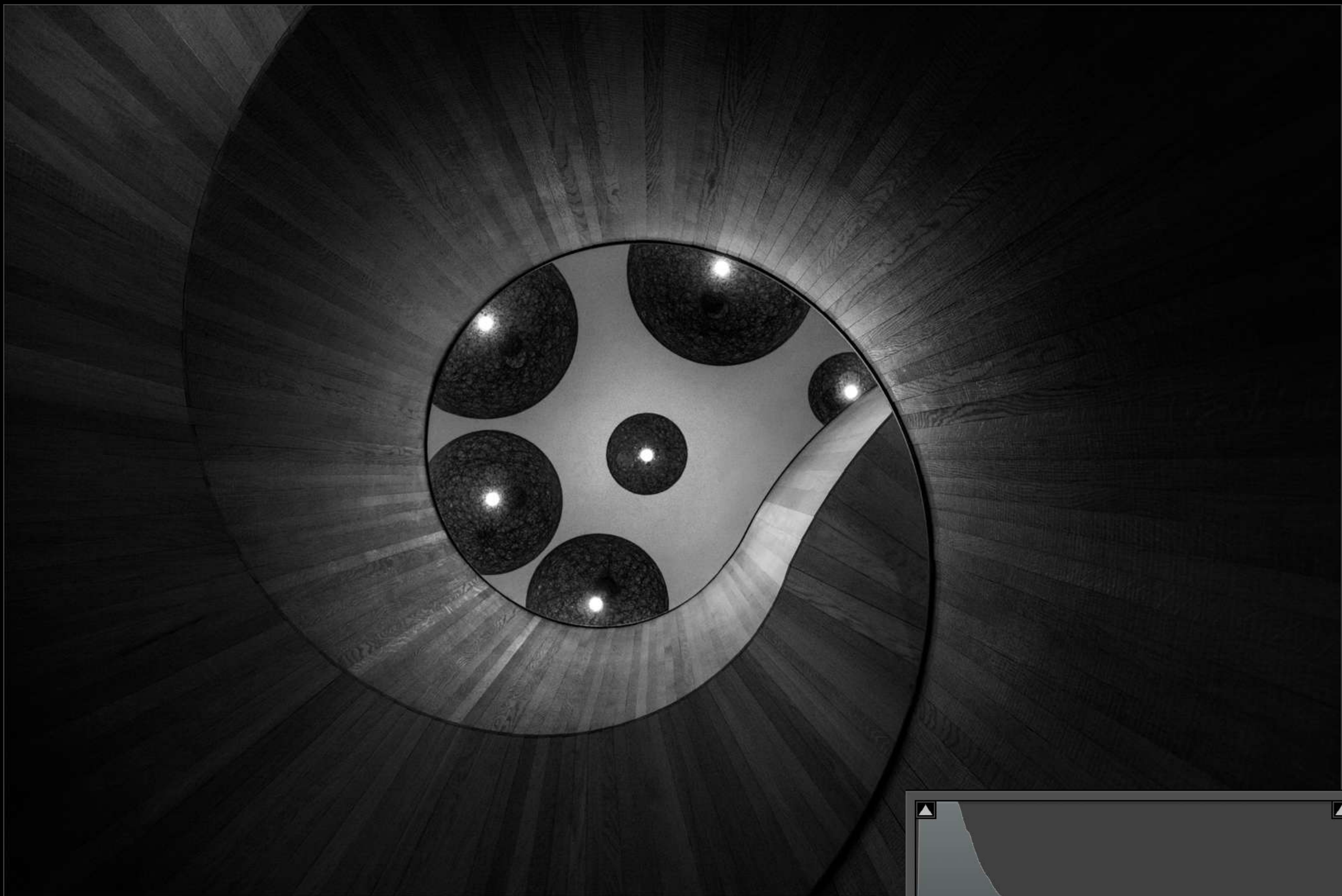
85 mm

$f / 11$

$\frac{1}{200}$ sec

☐ Original Photo





Infra Red Monochrome











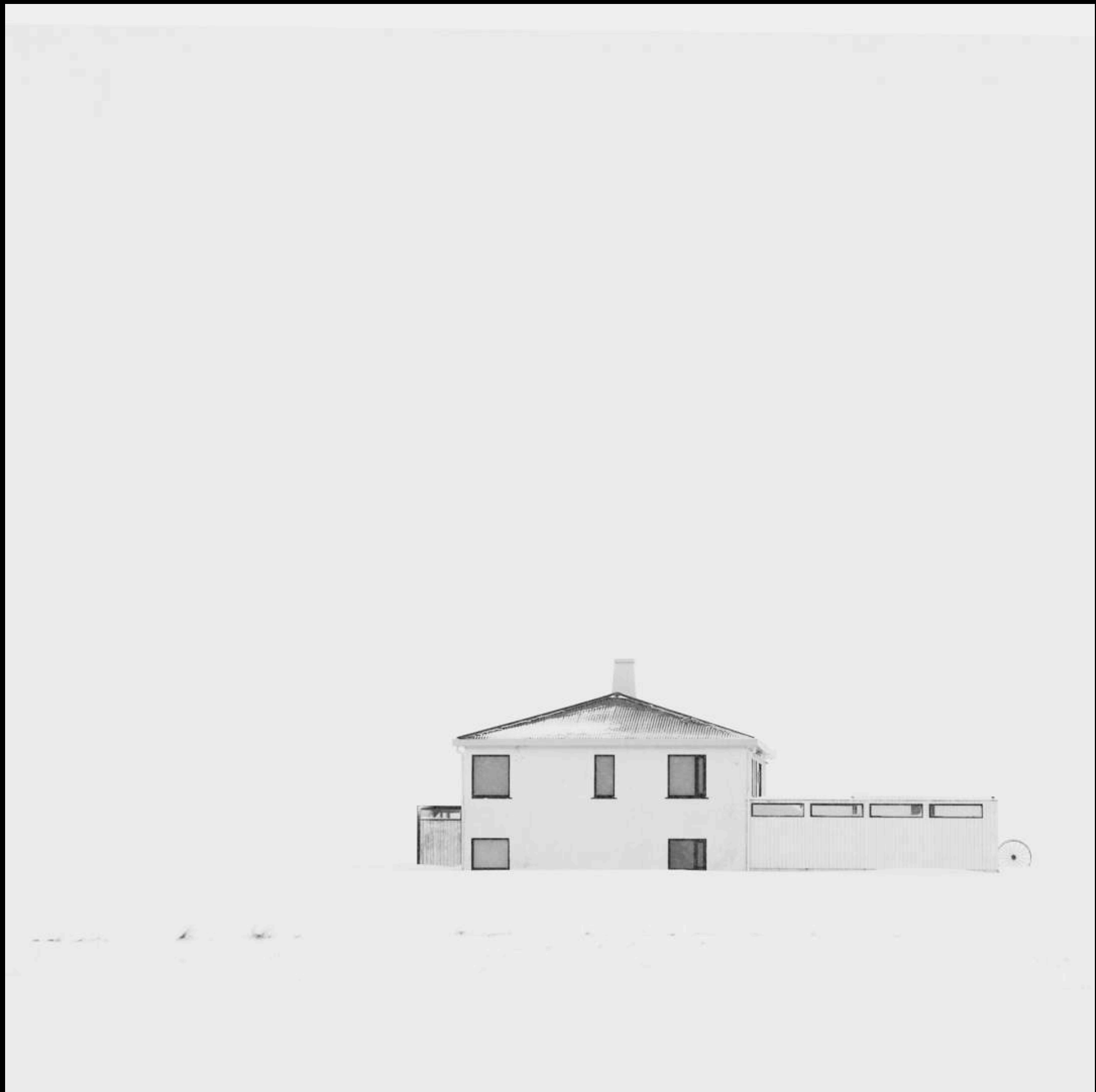
Minimalism

- Simplicity
- Negative space
- Composition
- Isolation
- Line and shape

















Evaluating mono images

- Impact
- Light
- Story
- Technical quality
- Composition
- Creativity
- Interest
- Style
- Presentation

Split toning



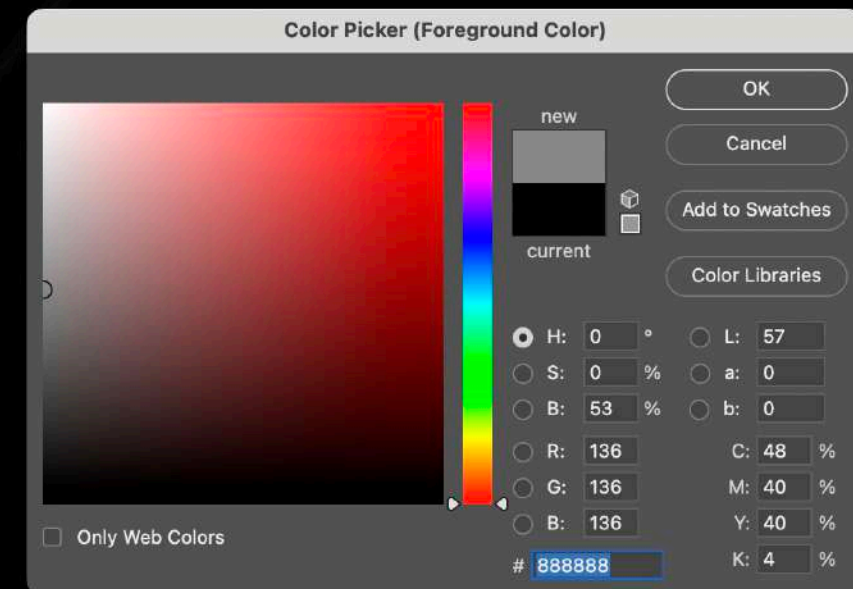




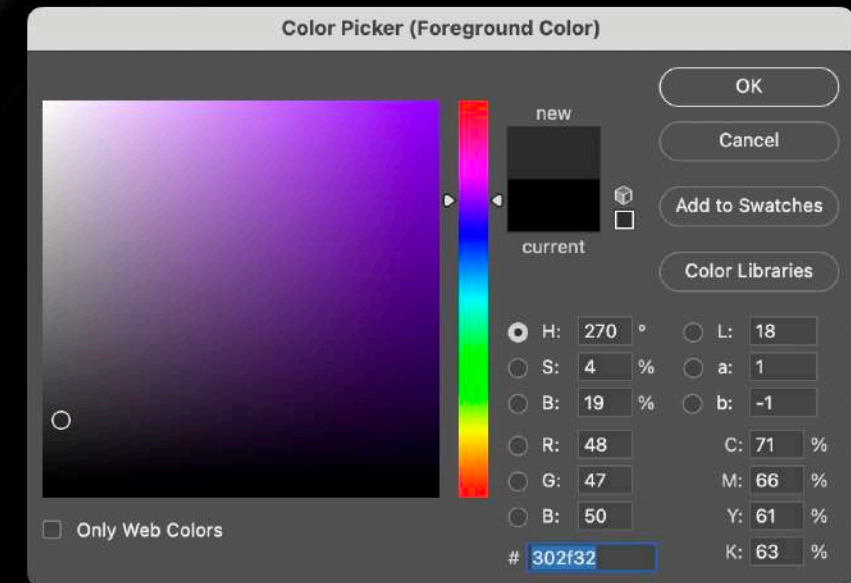
Chromatic aberration

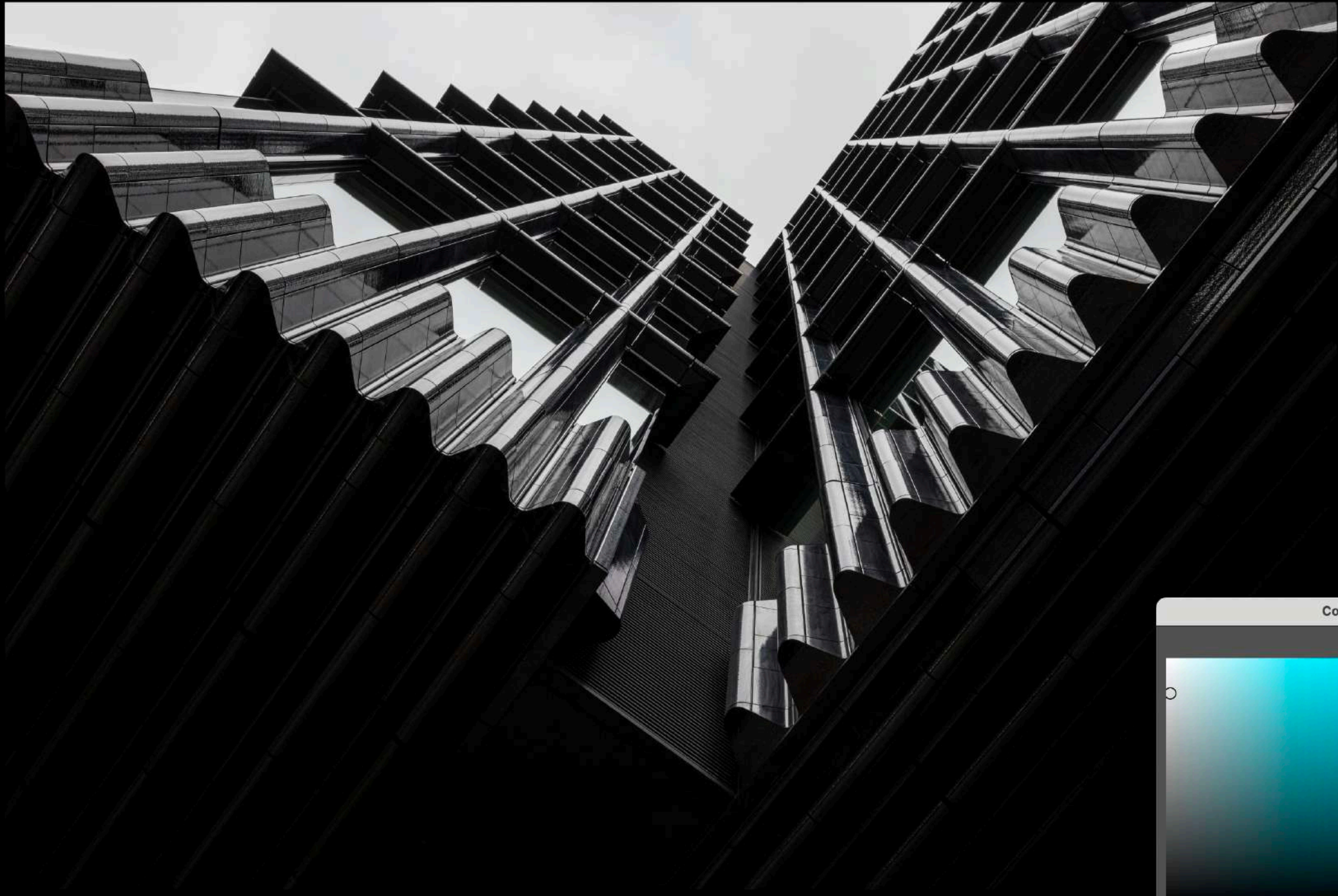


Pure Black and White



Retains colours as H value varies





Color Picker (Foreground Color)

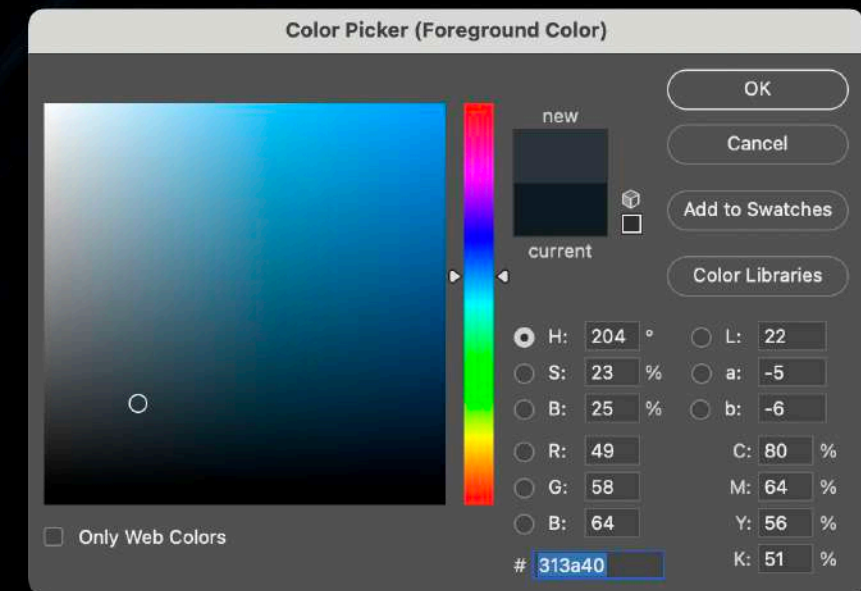
OK Cancel Add to Swatches Color Libraries

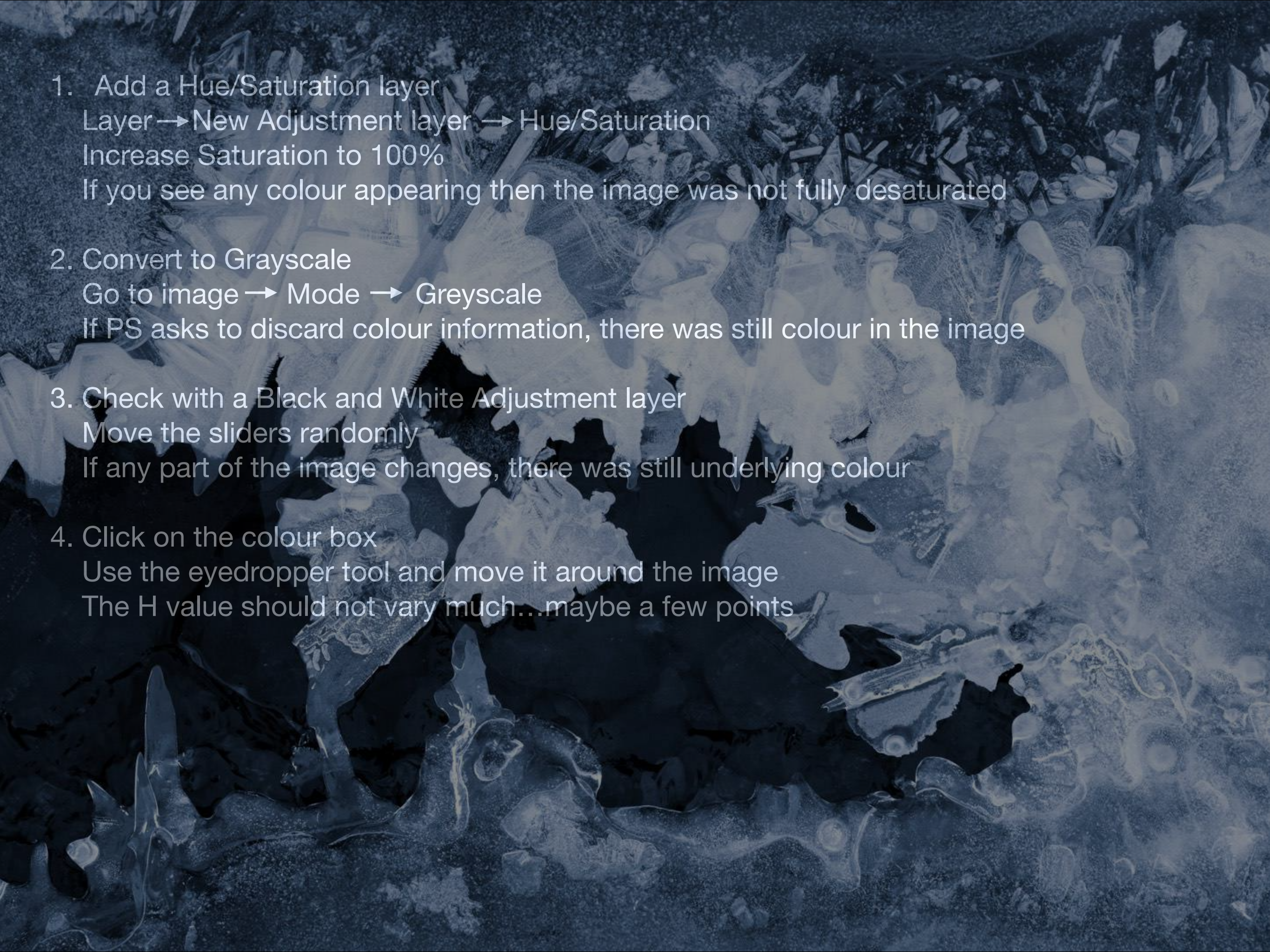
new current

☒ H: 189 ° ☐ L: 88
☐ S: 1 % ☐ a: -1
☐ B: 86 % ☐ b: -1
☐ R: 217 C: 14 %
☐ G: 220 M: 8 %
☐ B: 220 Y: 9 %
d9dcde K: 0 %

☐ Only Web Colors

Blue toning monochrome



- 
1. Add a Hue/Saturation layer
Layer → New Adjustment layer → Hue/Saturation
Increase Saturation to 100%
If you see any colour appearing then the image was not fully desaturated
 2. Convert to Grayscale
Go to image → Mode → Greyscale
If PS asks to discard colour information, there was still colour in the image
 3. Check with a Black and White Adjustment layer
Move the sliders randomly
If any part of the image changes, there was still underlying colour
 4. Click on the colour box
Use the eyedropper tool and move it around the image
The H value should not vary much...maybe a few points

Photographic genres that translate well into Mono

- landscape photography
- portrait photography
- architectural photography
- street photography
- abstract photography
- wildlife
- macro and more!

Landscape and long exposures















Portraits











Architectural images















Street photography





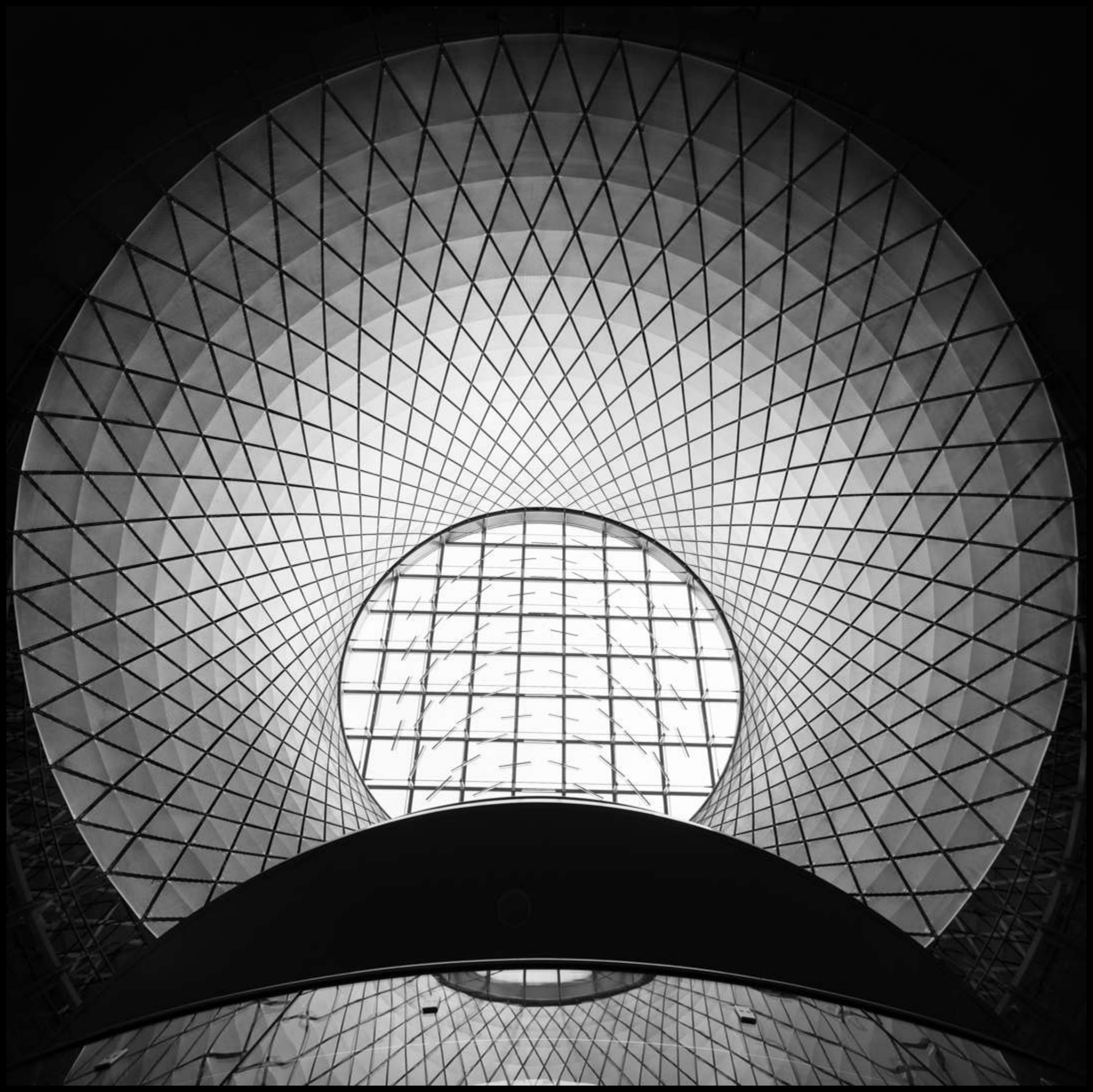




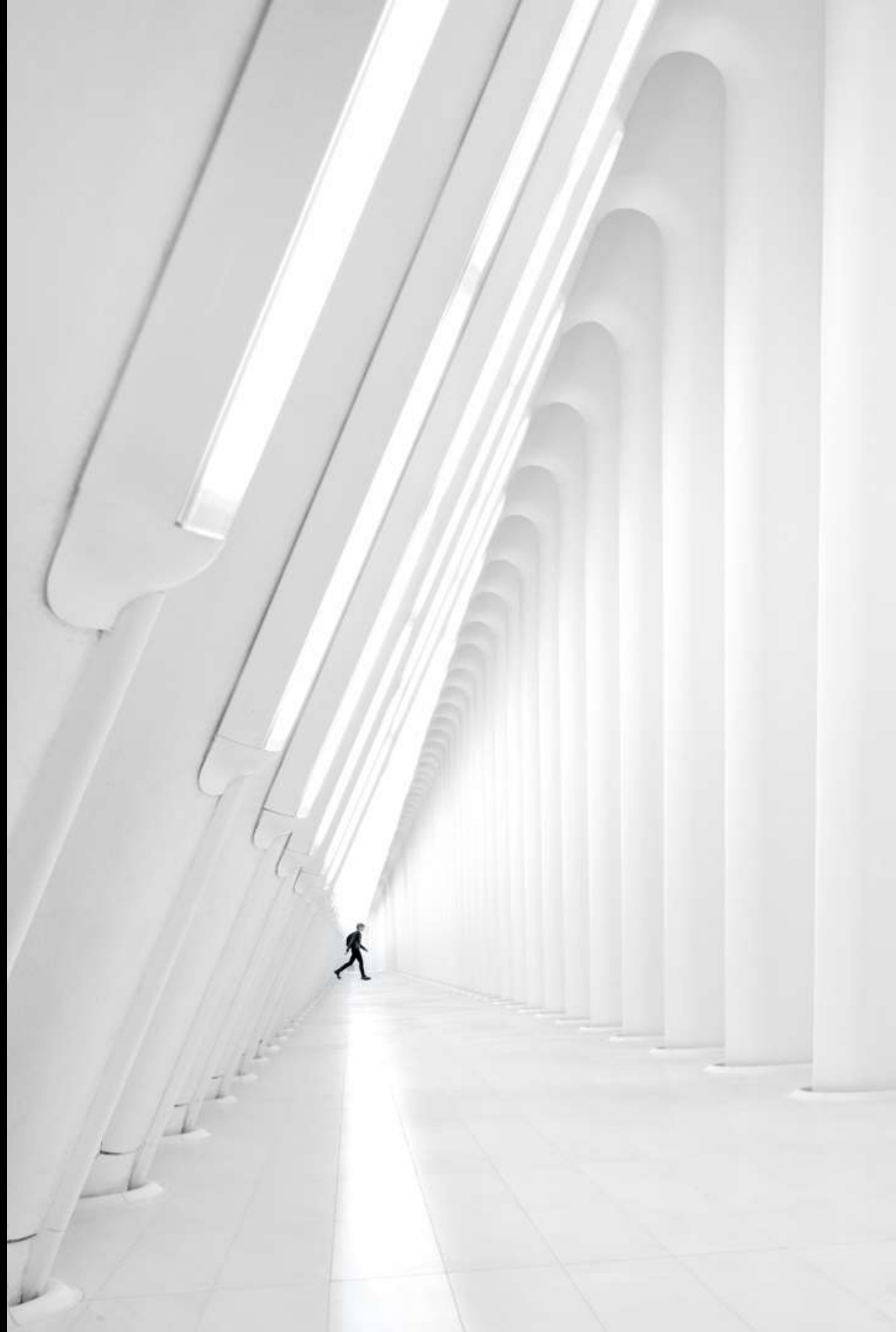


Abstract images























Post-processing and Presentation



- Many ways to convert from RAW to mono
- Dodging and burning critical
- Stroke or lack thereof
- Noise

- print
- papers
- presentation





- Questions?



- Stretch your legs