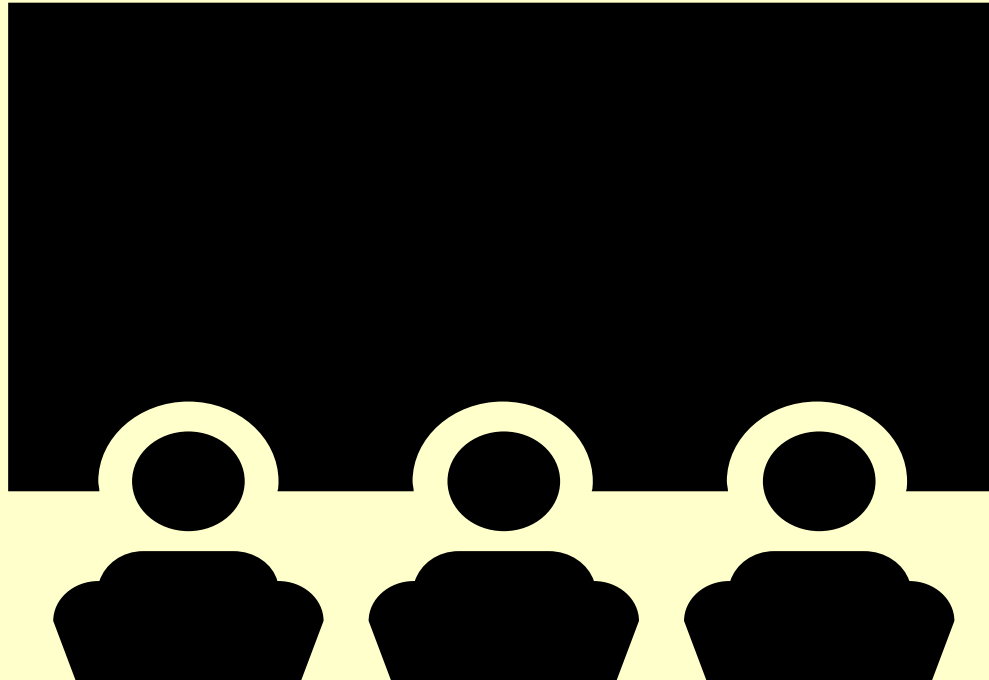




PSSA - JAP

# Judging Pitfalls 2023





## Judging Pitfalls 2023

**Let's start the session by listing all the RULES in photography!!**



## Judging Pitfalls 2023

Let's start the session by listing all the rules in photography!!

- **Plagiarism is NOT allowed.**
- **Everything in your photo MUST be your own work**



## Judging Pitfalls 2023

Otherwise:

There are **NOOOO rules** in photography;  
only guidelines!!!!!!





## Judging Pitfalls 2023

Otherwise:

There are **NOOOO rules** in photography;  
only guidelines!!!!!!





## Judging Pitfalls 2023

1. There are NOOOO rules in photography; only guidelines!!!!!!!
2. There will always be those who look at technique, who ask “how”, while others of a more curious nature will ask “why”.
3. Judging will ALWAYS be SUBJECTIVE. The trick is to be as OBJECTIVE in this subjective world as is possible.

*I have always preferred inspiration to information.  
Man Ray.*

4. Club Judging: Sharing and learning. Listen to advice that is offered.
5. Club Judging: Appraisal; teaching. Give modest advice on how you think the photograph can be improved.  
To judge is a big responsibility.
6. Did your photography improve since joining the camera club?

Will my comments help the photographer to improve?

7. We are all judges; even if only you judge the judges!

★★ You start by assessing your own work;

- how objective are you then?

## 8. What is judging about:

- Looking for the message/story of the picture
- Analysing the picture content and treatment.  
Considering the technical aspects
- Comments: Delivered in a constructive package
- It is not about promoting your own ideas, neither being over critical or negative
- It is **not** a fault-finding mission
- You as judge will often be judged/criticized.
- Be clear, honest, constructive and consistent in your judgement and comments.

9. **Good Photography do start with the Technical aspects. BUT:** Photography is *ALL* about light, composition and *EMOTION*. Larry Wilder.

- **Correct exposure**
- **Correct sharpness**
- **Correct colour and Tonal balance (Mono and Colour)**
- **Well composed**
- **Processing:**
  - **Noise (but...)**
  - **Halos (but...)**
  - **Chromatic Aberration**
  - **Over Saturation (but...)**

## 10. Good judging – Express yourself correctly!!

Your score and comments **MUST** match

Do not pass judgement, appraise, assess and analyse.

Do NOT describe the photo!!

Judging should be evaluative, not critical. Be:

- Helpful
- Fair
- Informed. How often do I look at pictures other than my own? Read books; visit exhibitions!
- Interesting
- Unbiased
- A good time manager: positive comments, constructive, friendly, respectful, don't waffle, admit if you don't know (but...)

- Enjoy judging
- Don't lecture
- Don't make assumptions (you will most likely be wrong)
- Judge what you see on the screen;  
    You DON'T judge difficulty  
    You DON'T judge Exif data
- Keep an open mind
- Don't compare; or be prejudiced by what you have seen before.
- Be helpful, encourage and develop high standards of photography. Promote photography as a pleasure; other people's work is a joy to behold.

11. The message of the photograph is all important. It might be that the photographer got it “right” and you as judge “failed” to read the message; or visa versa.
12. Mindset of the Judge: do I look with a **critical** mind, or with an **appreciative** mind?
13. Your score and comments **MUST** match!!!!

The judge however has the final decision, after all, you have been asked to give your opinion. **BUT** remember: Judging is a **HUGE** responsibility.

Why did I enter my Image: To get a gold/COM **or** To get someone else's opinion!!



## **The Challenge:**

- Apply Your Mind for the CORRECT advice
- If you don't know what to say don't look for some fault to pick on
- **Expressing Yourself Correctly!!!!!!!!!!!!!!**

# The TECHNICAL ASPECTS are IMPORTANT:

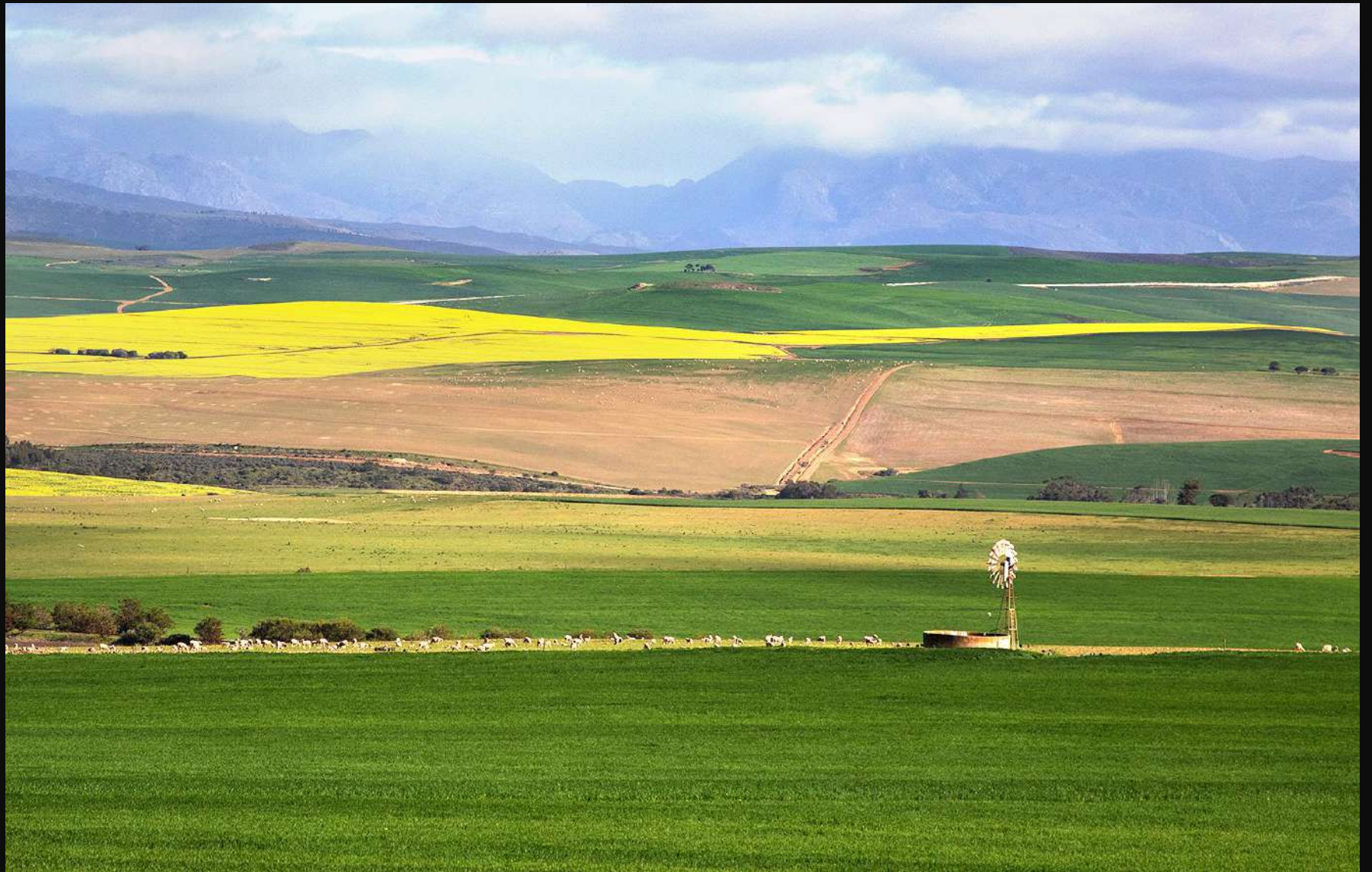
(it is the foundation of an image)

- Correct exposure
- Correct sharpness
- Noise
- Correct processing,
- etc...

Correct Exposure















Correct Sharpness



































# Clichés: (Real Pitfalls)

1. Nit-picking
2. Subject In the middle
3. Negative space
4. Even/uneven numbers
5. Have to see the face?
6. Photographing other people's Art
7. Movement in the wheels
8. Not all images require cropping
9. Not all images require a border/Unfit borders
10. Wrong time of day
11. Horizon in the middle/skew
12. Sharp from front to the back
13. Catchlight in the eye
14. Mono must have from pure White To Black....

Personal likes/dislikes

And there are many more .....



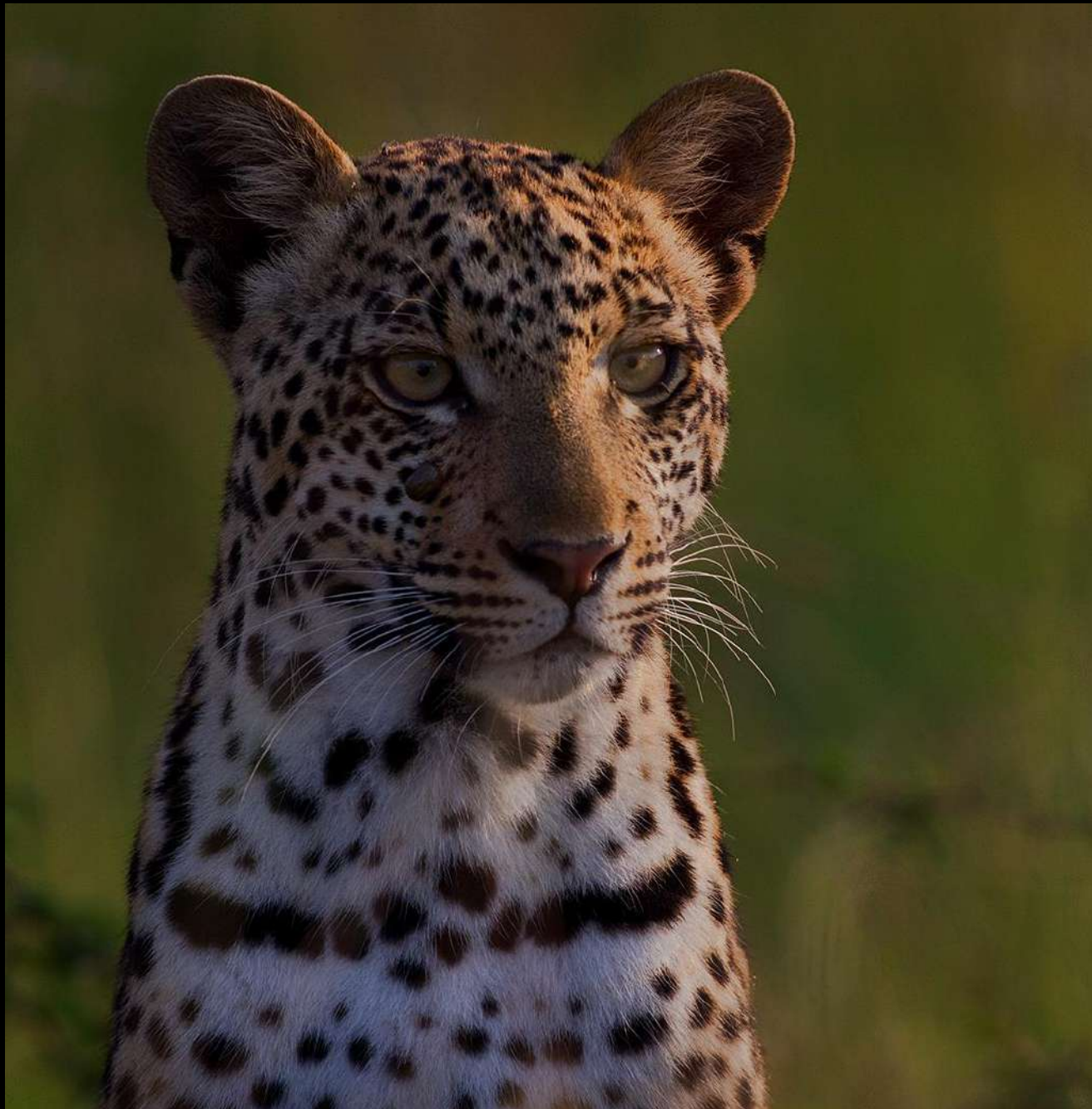
## Nitpicking

- does it have an influence on the score?  
If it does, mention it, if it doesn't DON'T  
mention it









Subject in the Middle















## Negative Space









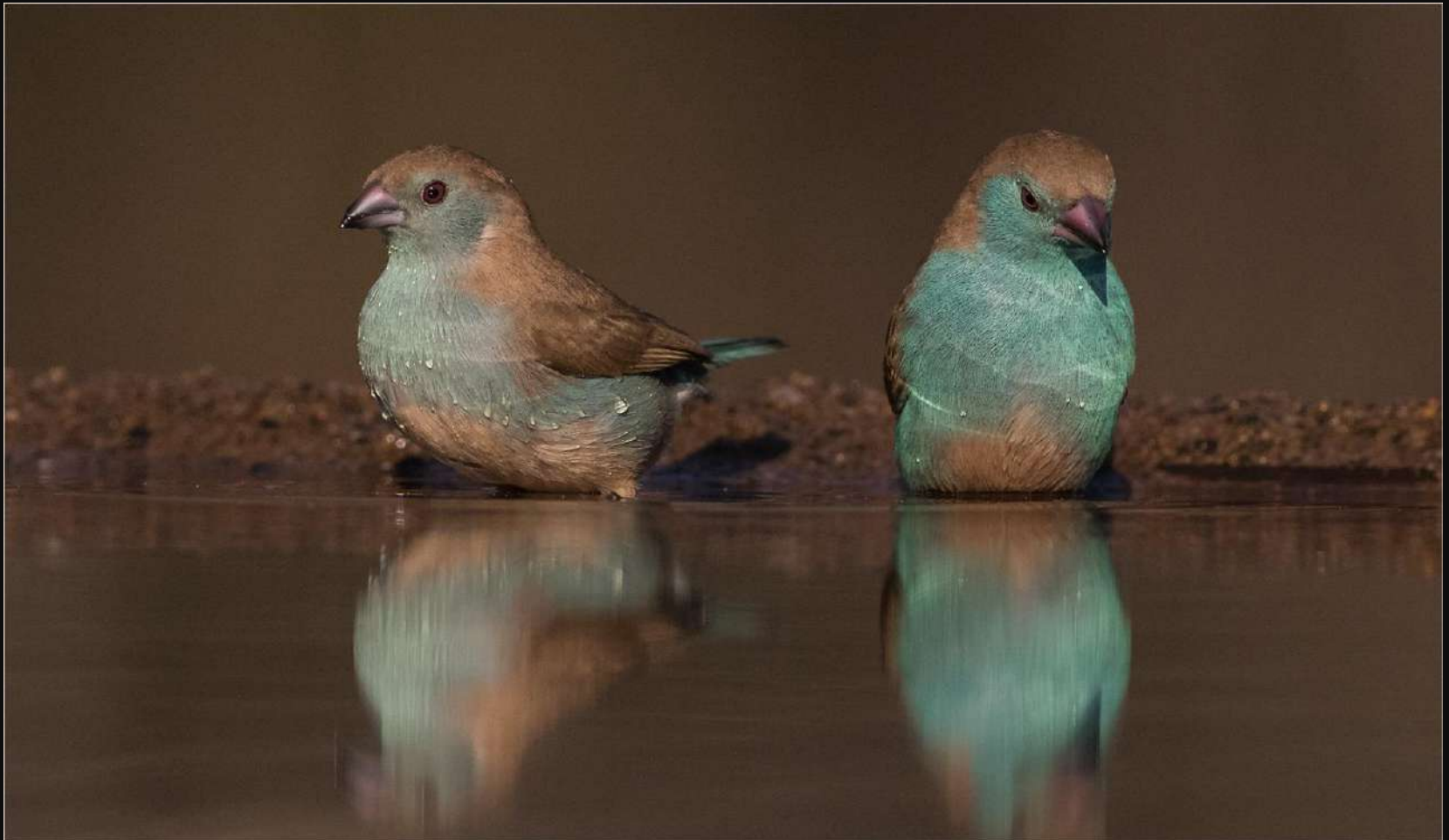






Even/Uneven Numbers

Don't count the subjects!!!  
And don't mention it!!

















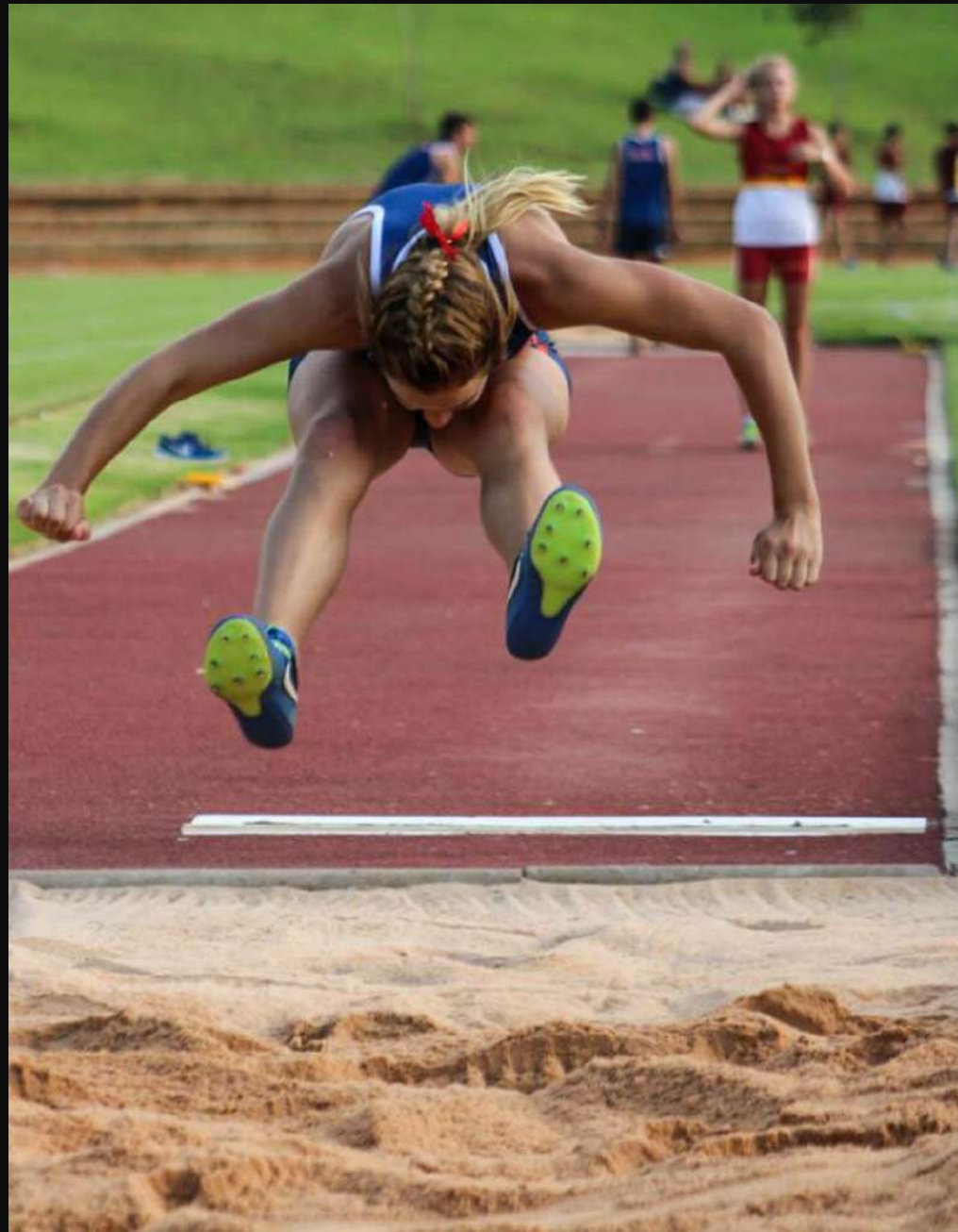




Must See the Face





















Photographing other peoples Art  
(vs plagiarism)





























Straighten the angles?







Movement in the wheels  
- Talk about the correct shutter speed













Not all images need Cropping  
- correct cropping







































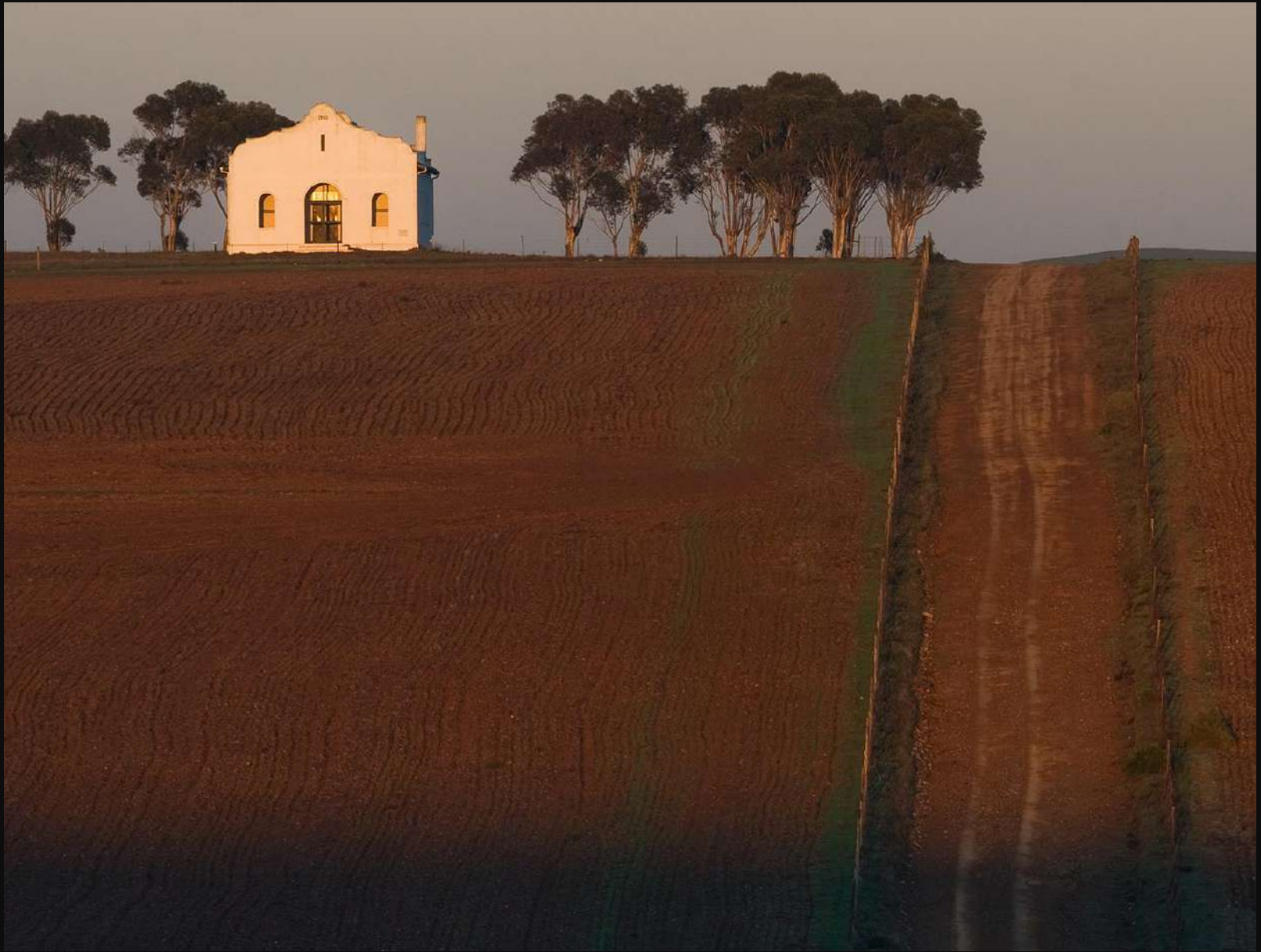




Wrong Time of Day  
- talk about the light











## Horizon in the Middle/skew











Skew horizon







# Landscapes

- Sharp from back to front











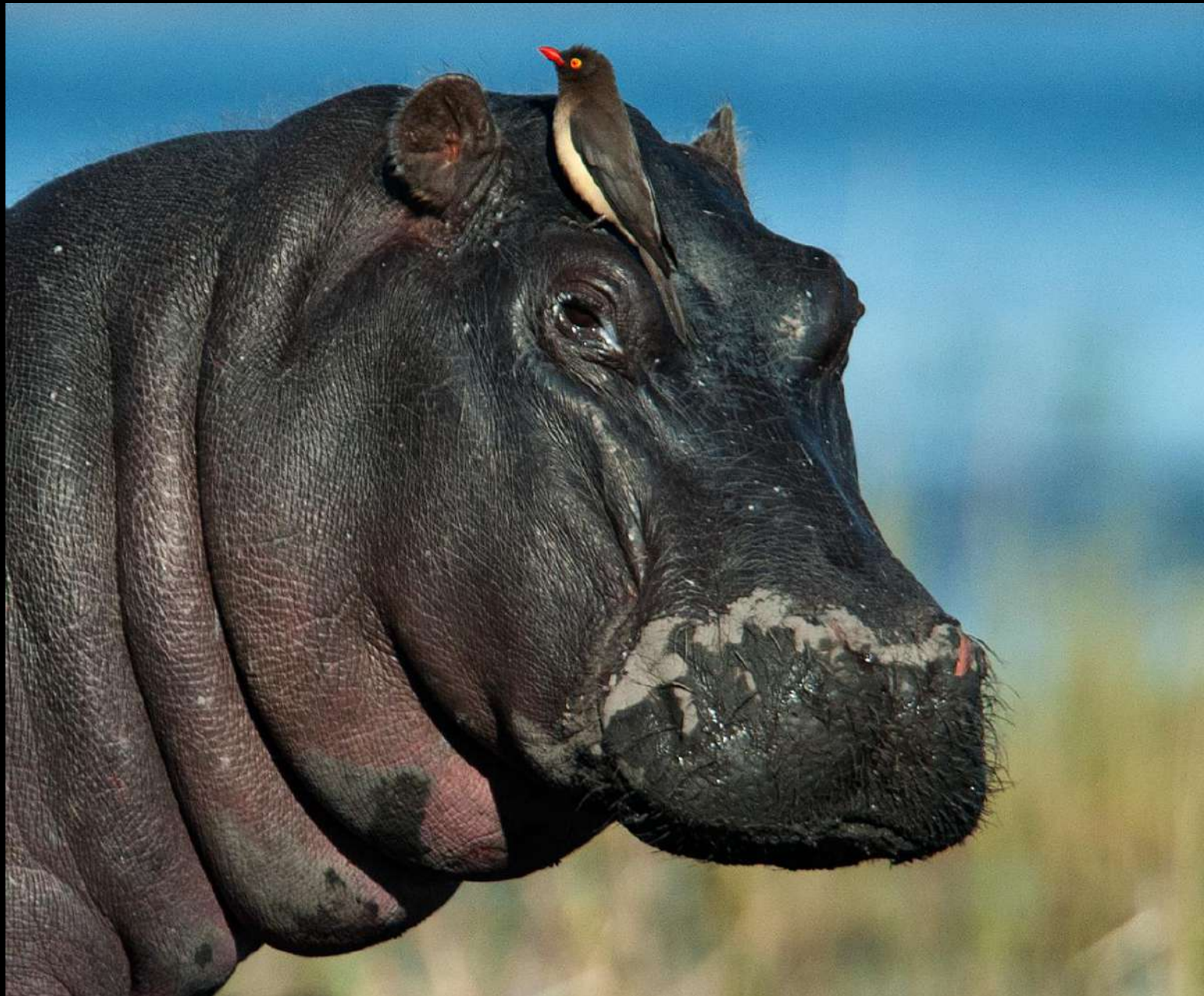




Catchlight / light in the eye









No catchlight but the eye is lit



Black-  
White

Tonal Range









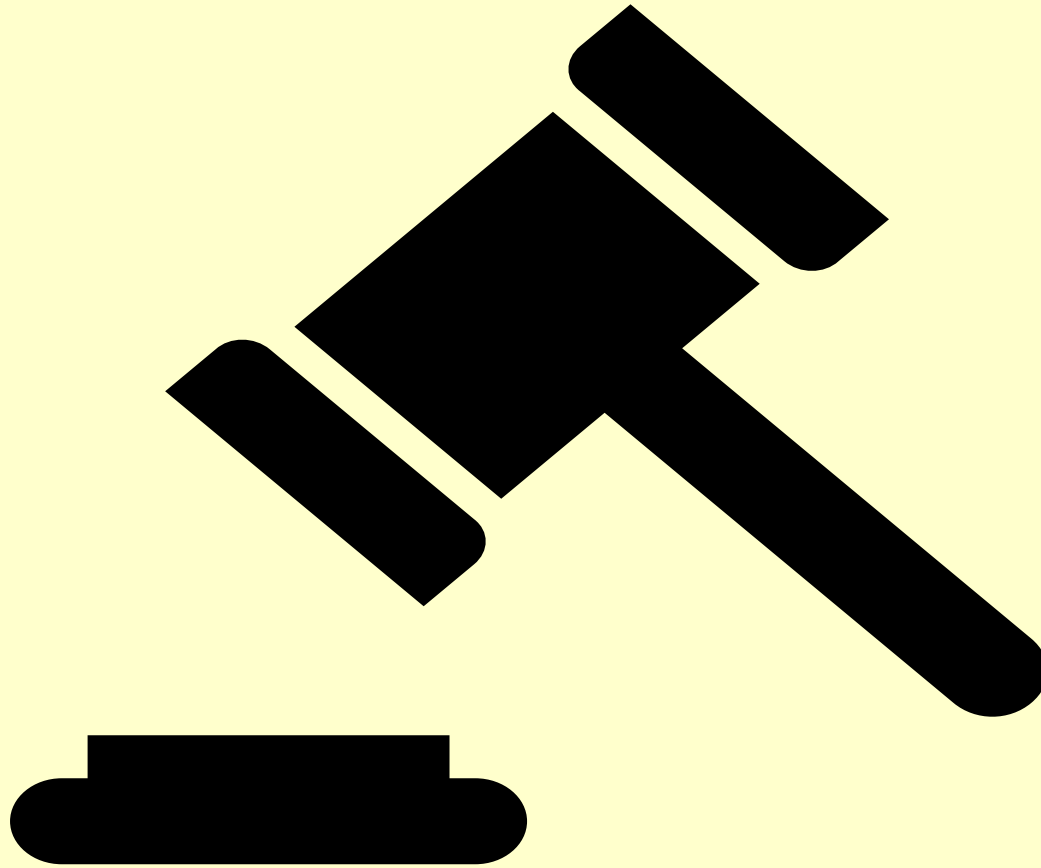






## JAP - Evaluation Aspects:

1. Were the comments given in line with the score,
  - Did the judge gave comments that reflected the score.
2. Was the judge consistent,
  - Images with similar standard should receive similar scores (regardless the style/category).
3. Were the comments constructive and helpful,
  - Were the comments given helpful in improving the image/photography. Avoid giving your opinion on how you would have taken the image.
4. Was the judge well-spoken and audible,
  - The manner in which comments are given is very important, is the message clear and understandable.
5. Did the judge use a wide spectrum of scores/awards,
  - It is important that judges score fairly but also honestly,  
Consider whether they scored across the board as appropriate.
6. Did the judge consider the impact or storytelling, mood and emotion where relevant,
  - While not all images have a story telling element or message, assess whether the judge considered all and did not just stick to the technicalities. (fault finding).
7. Was the judge enriching and enjoyable?
  - This is a general criteria to assess if the judge made the judging informative, enriching and enjoyable. How much did members learn?



You be an **INFORMED** judge!!

- Your comments need to fit the score!!!
- Your comments need to be appropriate and helpful !!